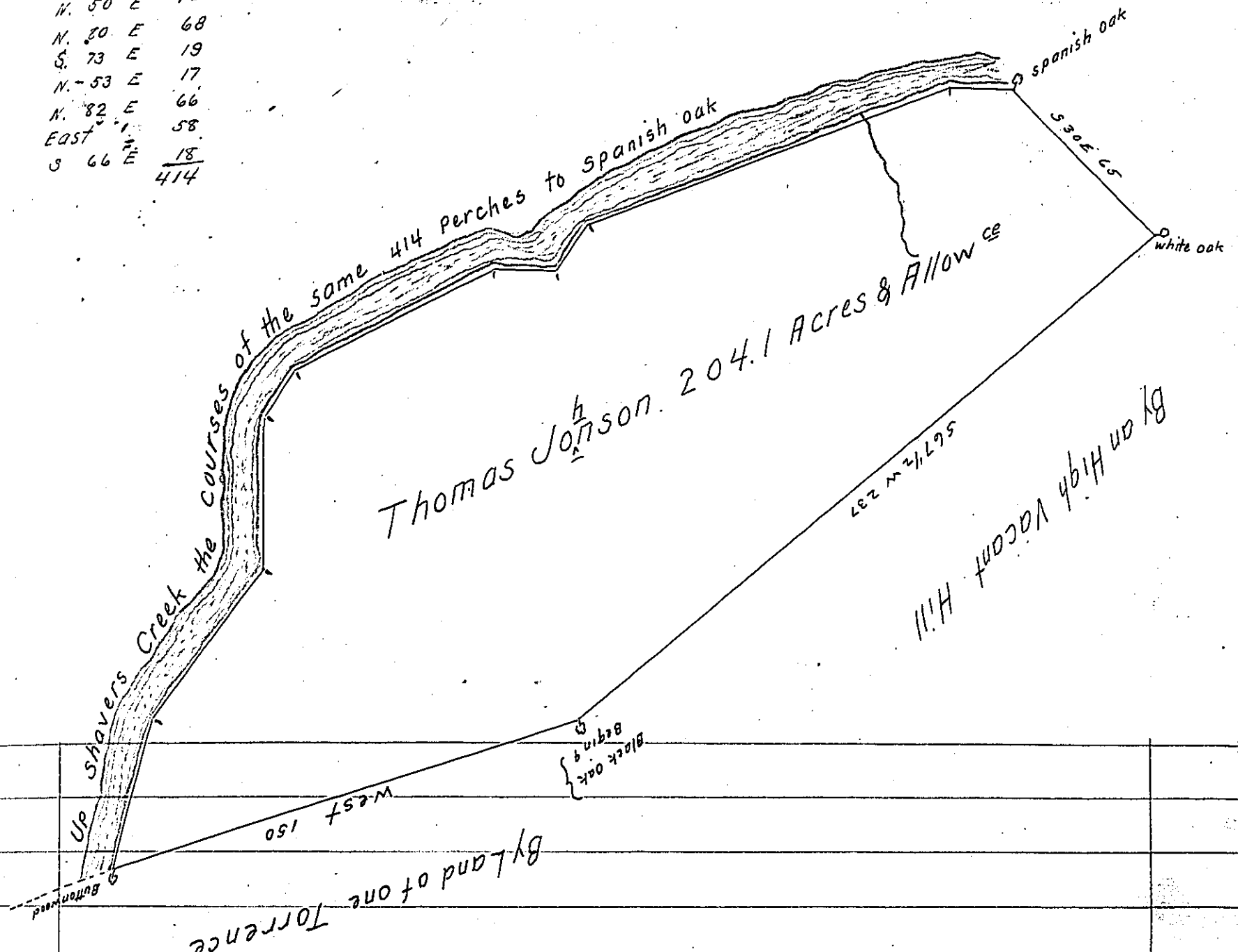


The Courses and Distances
up the Creek.

N. 32 E	49
N. 55 E	56
N. 17 E	47
N. 50 E	16
N. 80 E	68
S. 73 E	19
N. 53 E	17
N. 82 E	66
East	58
S 66 E	18
	414



The Draught of a Tract of Land situate on Shavers Creek in the County of Cumberland containing Two Hundred and Four Acres and Twenty Perches with the usual Allowance of Six Acres p. Cent. for Roads &c.^a Survey'd For Thomas Johnson the 24th Day of April Anno Dom. 1766. In Pursuance of a Warrant from the Honble the Proprietaries Bearing Date at Philada^a the 3^d Day of June Anno Dom. 1763.

To John Lukens Esqr. Surv^r. Gen^l. } P. W^m Maclay Depty Surv^r.
of the Province of Pen(syl)vania }

IN TESTIMONY that the above is a copy of the original remaining on file in the Department of Internal Affairs of Pennsylvania, made conformably to an Act of Assembly approved the 16th day of February, 1833, I have hereunto set my Hand and caused the Seal of said Department to be affixed at Harrisburg, this seventh day of June 1905.

Isaac R. Brown
Secretary of Internal Affairs.